

Annexure

PERFORMANCE OF EIGHT CORE INDUSTRIES

**YEARLY INDEX & GROWTH RATE
BASE YEAR 2004-05=100**

(Weight in IIP: 37.90 %)

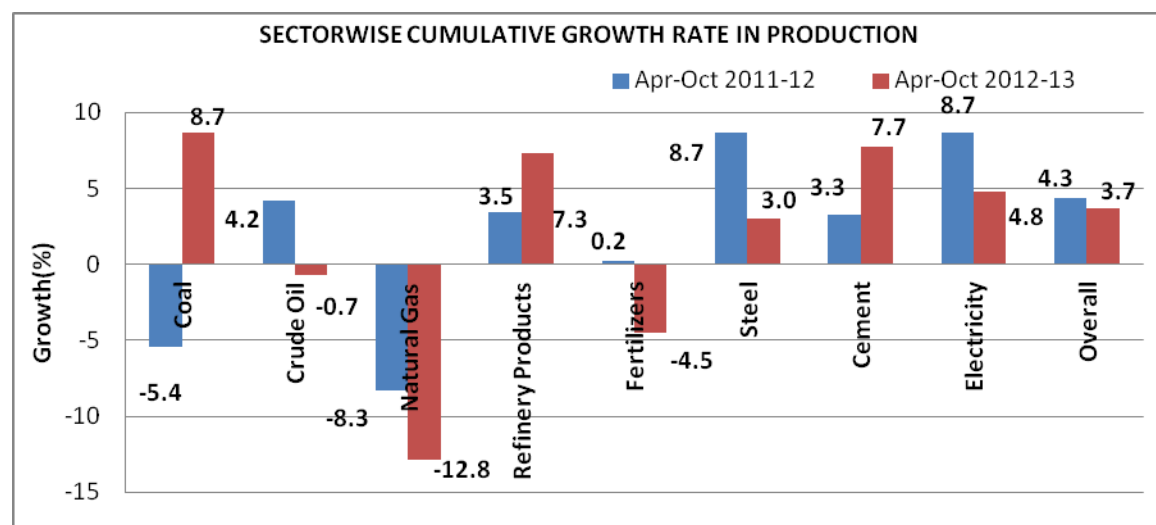
INDEX

Sector	Weight	2007-08	2008-09	2009-10	2010-11	2011-12	Apr-Oct 2011-12	Apr-Oct 2012-13
Coal	4.379	119.9	129.5	140.0	139.7	141.4	118.0	128.3
Crude Oil	5.216	100.4	98.6	99.1	111.0	112.1	113.2	112.4
Natural Gas	1.708	102.1	103.4	149.5	164.4	149.7	153.5	133.8
Refinery Products	5.939	122.8	126.5	125.9	129.7	133.8	130.6	140.1
Fertilizers	1.254	95.5	91.8	103.4	103.4	103.8	103.3	98.7
Steel	6.684	128.9	131.4	139.3	157.7	168.7	167.3	172.4
Cement	2.406	132.5	142.1	157.1	164.2	175.2	166.1	178.9
Electricity	10.316	119.9	123.2	130.8	138.1	149.3	148.7	155.8
Overall Index	37.903	118.5	121.8	129.9	138.4	144.4	140.5	145.7

GROWTH RATE (in %)

Sector	Weight	2007-08	2008-09	2009-10	2010-11	2011-12	Apr-Oct 2011-12	Apr-Oct 2012-13
Coal	4.379	6.3	8.0	8.1	-0.2	1.2	-5.4	8.7
Crude Oil	5.216	0.4	-1.8	0.5	11.9	1.0	4.2	-0.7

Natural Gas	1.708	2.1	1.3	44.6	10.0	-8.9	-8.3	-12.8
Refinery Products	5.939	6.5	3.0	-0.4	3.0	3.1	3.5	7.3
Fertilizers	1.254	-7.9	-3.9	12.7	0.0	0.4	0.2	-4.5
Steel	6.684	6.8	1.9	6.0	13.2	7.0	8.7	3.0
Cement	2.406	8.1	7.2	10.5	4.5	6.7	3.3	7.7
Electricity	10.316	6.3	2.7	6.2	5.6	8.1	8.7	4.8
Overall Index	37.903	5.2	2.8	6.6	6.6	4.4	4.3	3.7



PERFORMANCE OF EIGHT CORE INDUSTRIES

MONTHLY INDEX & GROWTH RATE BASE YEAR 2004-05=100

(Weight in IIP: 37.90 %)

INDEX

Sector	Coal	Crude	Natural Gas	Refinery	Fertilizers	Steel	Cement	Electricity	Overall
--------	------	-------	-------------	----------	-------------	-------	--------	-------------	---------

		Oil		Products					Index
Weight	4.38	5.22	1.71	5.94	1.25	6.68	2.41	10.32	37.90
Oct-11	126.3	113.6	152.2	124.5	106.5	167.1	174.3	151.9	142.0
Nov-11	151.5	108.9	145.4	136.2	101.8	161.8	165.3	145.5	142.4
Dec-11	168.1	112.1	147.9	139.9	110.1	176.7	183.6	149.7	150.7
Jan-12	172.7	112.0	147.2	137.2	113.2	170.3	192.4	151.0	150.6
Feb-12	175.5	105.8	136.4	133.9	102.7	169.2	189.8	145.8	146.9
Mar-12	202.7	113.6	145.4	143.8	94.7	175.6	208.8	158.6	158.7
Apr-12	131.7	111.0	137.2	132.9	80.6	167.9	187.3	153.7	143.5
May-12	140.3	114.7	139.7	139.7	87.2	175.3	187.5	162.3	150.0
Jun-12	131.5	110.9	133.5	141.4	90.4	171.4	181.0	156.9	146.0
Jul-12	125.9	115.0	135.3	141.4	106.6	172.6	177.2	156.2	146.4
Aug-12	114.4	114.0	134.0	143.5	108.6	174.4	161.8	152.2	143.5
Sep-12	114.2	108.2	127.0	132.1	108.7	168.4	171.1	149.7	139.4
Oct-12	140.2	113.1	129.5	149.7	108.6	176.9	186.2	159.8	151.2

GROWTH RATE (in %)

Sector	Coal	Crude Oil	Natural Gas	Refinery Products	Fertilizers	Steel	Cement	Electricity	Overall Index
Weight	4.38	5.22	1.71	5.94	1.25	6.68	2.41	10.32	37.90
Oct-11	-8.8	-0.9	-7.4	-2.9	-2.1	4.2	0.3	5.3	0.4
Nov-11	4.9	-5.6	-10.1	11.2	-6.7	10.5	17.0	14.4	7.8
Dec-11	5.6	-5.6	-10.8	0.8	0.8	10.2	13.6	8.9	4.9
Jan-12	7.5	-2.0	-10.4	-4.6	4.0	-2.8	10.9	3.2	0.7
Feb-12	17.8	0.3	-7.6	6.2	4.1	4.7	9.8	8.6	6.9

Mar-12	6.8	-2.9	-10.1	1.6	1.5	2.3	7.1	2.8	2.2
Apr-12	3.8	-1.4	-11.3	0.6	-9.3	6.8	8.7	5.4	3.1
May-12	8.0	0.5	-10.8	2.9	-15.1	4.9	11.4	5.9	4.0
Jun-12	7.2	-0.8	-11.1	6.1	-11.7	-0.5	10.1	8.8	3.8
Jul-12	2.1	-0.7	-13.5	3.6	-2.2	0.8	3.2	2.7	1.2
Aug-12	11.0	-0.6	-13.5	8.4	-2.1	1.8	0.4	1.9	2.4
Sep-12	21.4	-1.7	-14.8	10.3	5.7	2.0	13.8	3.9	5.0
Oct-12	10.9	-0.4	-14.9	20.3	2.0	5.9	6.8	5.2	6.5
